



**Series** VT6CP - B22 - 2 R 00 - A 1 \*

**Cam ring**

Volumetric displacement cm<sup>3</sup>/rev (in<sup>3</sup>/rev)

- \* B14/R14 = 46.0 (2.81)
- B15/R15 = 50.5 (3.08)
- B17/R17 = 58.3 (3.56)
- B20/R20 = 63.8 (3.89)
- B22/R22 = 70.3 (4.29)
- B25/R25 = 79.3 (4.84)
- B28/R28 = 88.8 (5.42)
- B31/R31 = 100.0 (6.10)

\* 'B' - for Mobile  
'R' - for Mobile - spring assisted

**Type of shaft**

- 2 - keyed (no SAE)
- 3 - splined (SAE C)
- X - splined

**Modifications**

**Seal class**

- 1 - S1 (for mineral oil)
- 4 - S4 (for fire resistant fluids)
- 5 - S5 (for mineral oil and fire resistant fluids)

**Design letter**

**Porting combination**

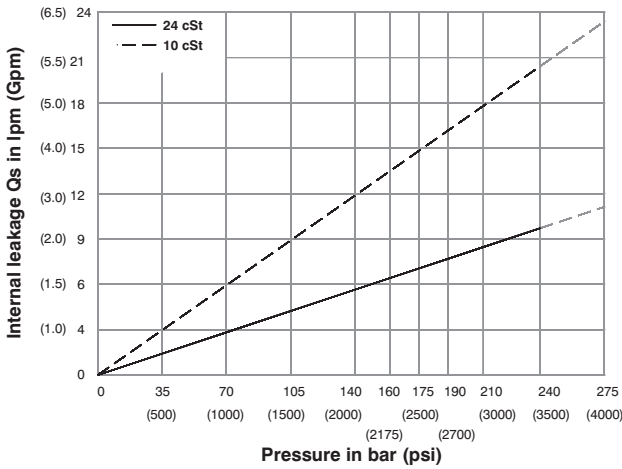
00 - standard

**S** - Suction port **P** - Pressure port

**Direction of rotation (view on shaft end)**

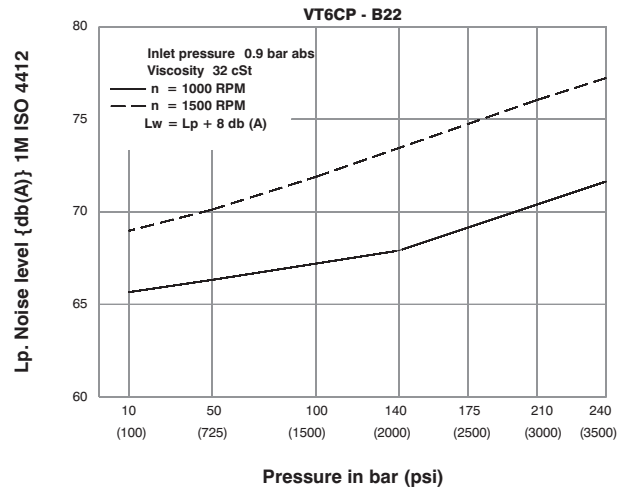
- R - clockwise
- L - counter-clockwise

**INTERNAL LEAKAGE (TYPICAL)**

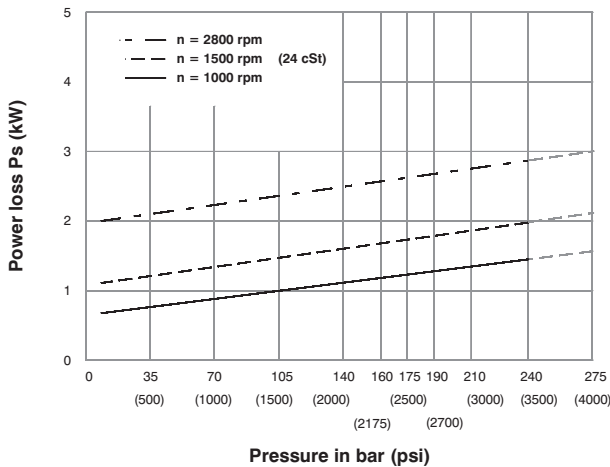


Do not operate pump more than 5 seconds at any speed or viscosity if internal leakage is more than 50% of theoretical flow.

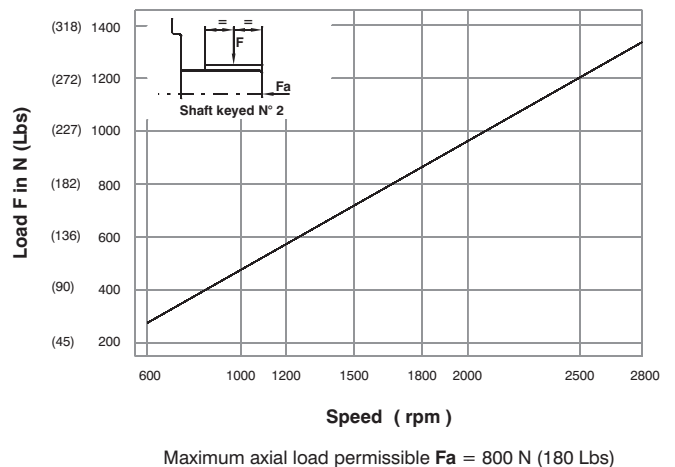
**NOISE LEVEL (TYPICAL)**

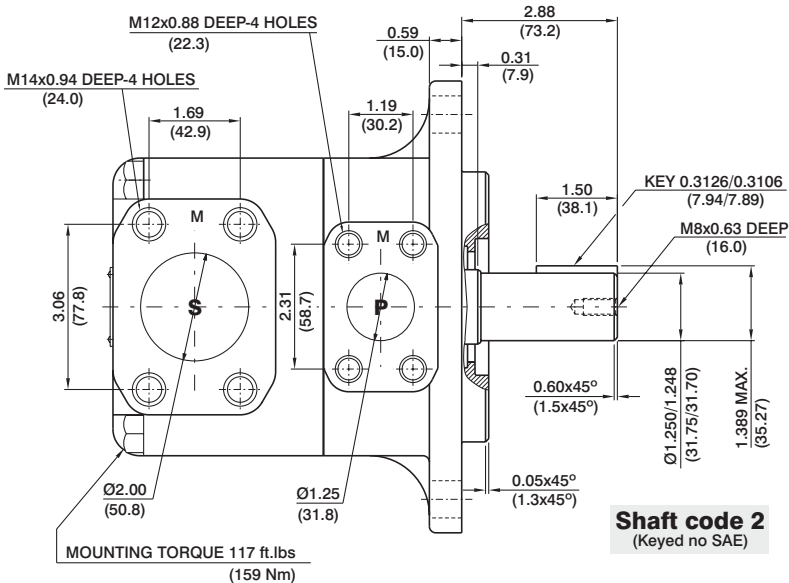


**HYDROMECHANICAL POWER LOSS (TYPICAL)**

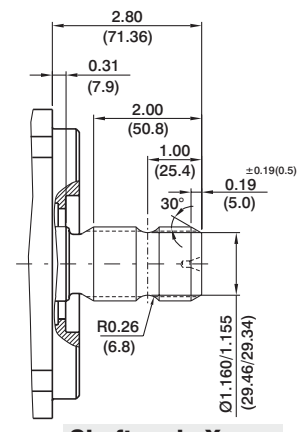


**PERMISSIBLE RADIAL LOAD**

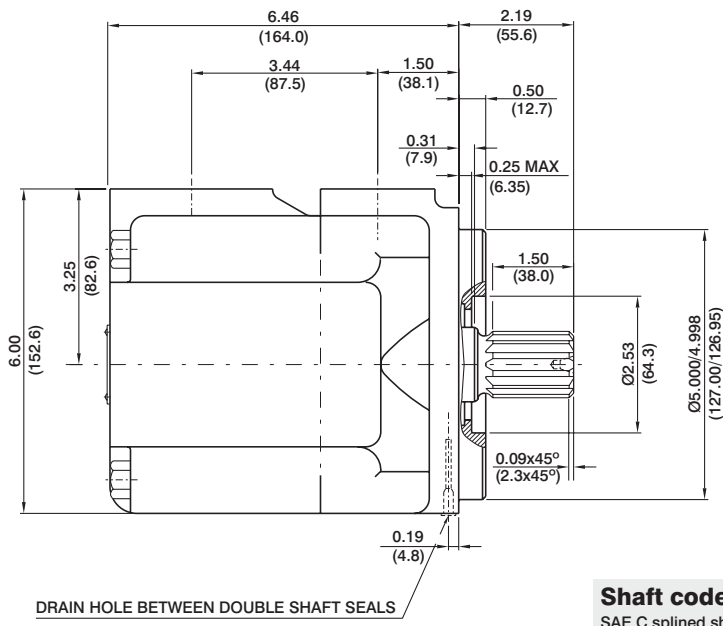




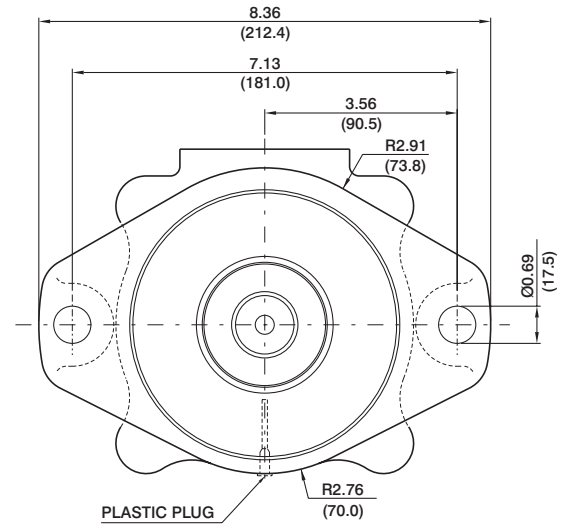
**Shaft code 2**  
(Keyed no SAE)



**Shaft code X**  
 ASAE spline shaft dec. 1996  
 Class 1-J498b  
 16/32 dp. 21 teeth  
 30° pressure angle  
 flat root od fit/type 2



**Shaft code 3**  
 SAE C splined shaft  
 Class 1-J498b  
 12/24 dp. 14 teeth  
 30° pressure angle  
 flat root side fit



## OPERATING CHARACTERISTICS - TYPICAL (24 cST)

Pressure port	Series	Volumetric Displacement V <sub>p</sub>		Flow q & n = 1500 rpm						Input power p & n = 1500 rpm					
				p = 0 bar (0 psi)		p = 140 bar (2000 psi)		p = 240 bar (3500 psi)		p = 7 bar (100 psi)		p = 140 bar (2000 psi)		p = 240 bar (3500 psi)	
		in <sup>3</sup> /rev	cm <sup>3</sup> /rev	gpm	lpm	gpm	lpm	gpm	lpm	hp	kw	hp	kw	hp	kw
VT6CP	B14	2.81	46.0	18.25	69.0	16.79	63.5	15.60	59.0	2.55	1.9	23.60	17.6	39.56	29.5
	B15	3.08	50.5	20.00	75.6	18.62	70.4	17.46	66.0	2.68	2.0	25.61	19.1	42.91	32.0
	B17	3.56	58.3	23.12	87.4	21.69	82.0	20.50	77.5	2.82	2.1	29.37	21.9	49.48	36.9
	B20	3.89	63.8	25.32	95.7	23.86	90.2	22.67	85.7	2.95	2.2	31.92	23.8	53.91	40.2
	B22	4.29	70.3	27.88	105.4	26.45	100.0	25.26	95.5	3.08	2.3	35.00	26.1	59.14	44.1
	B25 <sup>1)</sup>	4.84	79.3	31.46	118.9	30.02	113.5	28.83	109.0	3.35	2.5	39.16	29.2	66.38	49.5
	B28 <sup>1)</sup>	5.42	88.8	35.24	133.2	33.78	127.7	32.93 <sup>2)</sup>	124.5 <sup>2)</sup>	3.75	2.8	43.85	32.7	65.04 <sup>2)</sup>	48.5 <sup>2)</sup>
B31 <sup>1)</sup>	6.10	100.0	39.68	150.0	38.22	144.5	37.38 <sup>2)</sup>	141.3 <sup>2)</sup>	3.75	2.8	48.95	36.5	72.95 <sup>2)</sup>	54.4 <sup>2)</sup>	

1) B25-B28-B31 = 2500 R.P.M. max. 2) B28-B31 = 210 bar (3000 psi) max. int.